

DUCT BOARD



It is a glass wool board faced with aluminium foil or black glass tissue on one side used for external thermal insulation, internal sound insulation of air conditioning and ventilation ducts.

Application

According to the purpose of the application, it is decided which duct board is going to be used. One type of board is chosen among unfaced board, board faced with aluminium foil and board faced with glass tissue. Before the boards are applied, duct surfaces to be used are cleaned to make sure the surface is free from dust and grease. If cold air insulation is going to be applied for the external thermal insulation, definitely the boards faced with aluminium foil should be used against condensation risk. The boards are installed into the pins (5- 6 pins per m²) fastened to the outside of the duct with foiled side facing the exterior. Board joints are sealed with self adhesive aluminium foil tape with great care to ensure that joints are water impermeable. When both thermal insulation and sound insulation are required for the ducts, duct board faced with glass tissue on the inside should be preferred. In that case, boards are installed to the pins which were fastened to the ducts from the inside so that the side with glass tissue faces inside.

Thickness (cm)	Width x Length (cm)	Package (m ²)
2	60 x 120	14,40
2,5	60 x 120	11,52
3	60 x 120	10,08
4	60 x 120	7,20
5	60 x 120	5,76



- High thermal insulation
- Fire safety
- Sound insulation
- Easy to apply
- Lightweight



TECHNICAL DATA SHEET

İzocam Duct Board

Properties	Symbol	Unit	Description					Tolerance	Standard
Material	-	-	Glass Wool					-	TS EN 14303
Density	ρ	kg/m ³	50					+/-10%	-
Width	w	mm	600					+/-1,5%	TS EN 822
Length	l	mm	1200					+/-2%	TS EN 822
Thickness	t	mm	20	25	30	40	50	T3 **	TS EN 823
Facing	-	-	Unfaced, Glass tissue, Glass cloth				Al-foil***	-	-
Reaction to fire	-	-	A1				C-s1,d0	-	TS EN 13501-1
Declared Thermal Conductivity (10 °C)	T	°C	10	25	50	75	100	-	TS EN 12667/12939 13787
	λ_D	W/m.K	0,032	0,034	0,037	0,041	0,046		
Specific Heat *	c	kJ/(kg.K)	0,84					-	EN 12524
Dynamic Elasticity *	Edyn	kN/m ²	0,8					-	DIN 52214
Packaging Material	-	-	PE Film					-	-
Other Information	Maximum service temperature on the side faced with aluminium foil is 90 °C.								

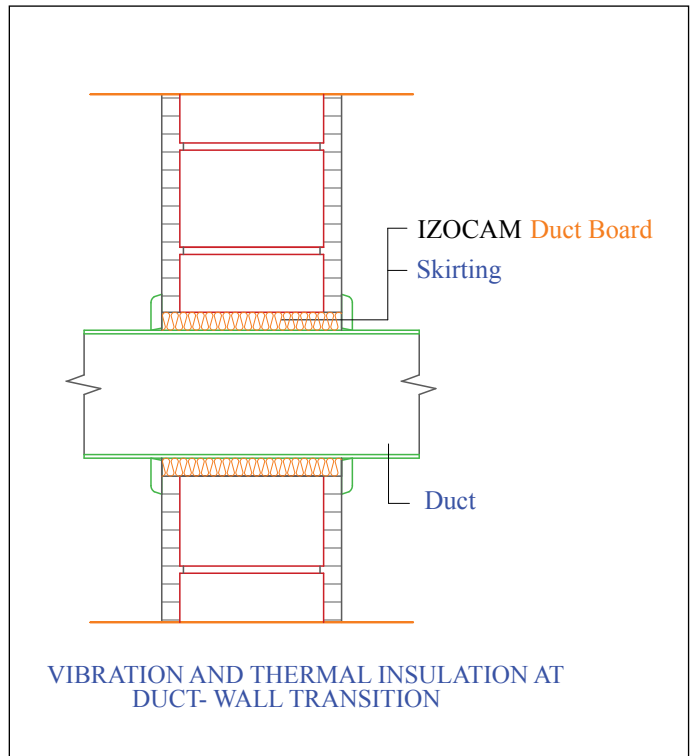
* Literature value.

** T3: -3% or -3 mm; +10% or 10 mm. The biggest value is chosen at minus tolerance, the smallest value is chosen at plus tolerance.

*** Non combustible Al-foil faced boards classified as A2-s1,d0.

Safety Reminders for Loading, Unloading, Shipping and Storing

- These operations should be done indoors in case of rainy weather conditions.
- Loading and unloading should be done by (at least) two people.
- Products should be wrapped by a waterproof cover even if the shipping distance is short.
- Products should not be superposed with pallets.
- Products should not be put into upright position.
- Products should not be stepped on and should not be used as steps.
- Products should not be pulled by their package.
- Products should be in packages (10 each) and maximum 6 packages can be superposed.
- Before binding, hard cardboards (minimum 20 x 50 cm) should be put on the corners of packages to protect against possible damages by ropes.
- Storage area should be protected against any wet threats such as rain, float, etc. Indoor spaces should be preferred.
- The packages should be put on the floor with extra care so the corners of the product especially is not damaged by a hit.



Izocam is not responsible for any problem because of misprinting. Izocam, the manufacturer, reserves the right to alter product specifications without prior notice. Izocam also manufactures special products upon request. For your requirements, you are requested to contact our Export Department.