

Your Solution Partner



www.zetasyapi.com

CONTENTS



About Us	Page 3
 Anchor & Firestop Systems	Page 4-5
 Protective Coatings	Page 6-7
 Steel Gratings and Walk Ways	Page 8-9
 Installation Systems, Ventilation Systems, Seismic Restraint Systems,	Page 10-11
 High-strength bolts, anchors, studs, threaded rod, nut and special productions	Page 12-13
 Sealing solutions for cables and pipes	Page 14-15
 Fire, Explosion and Pressure Relief Solutions	Page 16-17
 Pumps for the Fire, Municipal, Industrial, Flood Control, Plumbing, and HVAC	Page 18
 Water Treatment, Filtration and Softening Systems	Page 19
 Insulation materials	Page 20
 Filters	Page 21
Installation Services – PFP, Protective Coating, Firestop, Pipe Insulation	Page 22
References	Page 23-24



About Us

Zetas Construction Materials is an engineering company that gives technical support to construction, industry, oil & gas projects with offices in Ankara, Baku and Tbilisi.

We offer value added innovative construction materials and engineering solutions to our customers with our staff with more than ten years of experience in the field and our product portfolio with reputable worldwide brands. Our value-added solutions significantly reduce project costs.

Zetas Construction Materials, as your solution partner becomes stronger and grows rapidly with its customer oriented and engineering centered management approach.

As well as Turkey, Azerbaijan and Georgia are our focus countries, we search for new markets.

Our goal is to create a difference in the sector by prioritizing customer and employee satisfaction with high quality and innovative products.



fischer 
innovative solutions

Chemical Anchors



Rebar applications



Under water applications

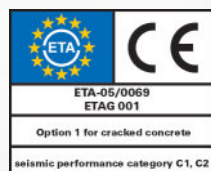
Mechanical Anchors



Balcony railings

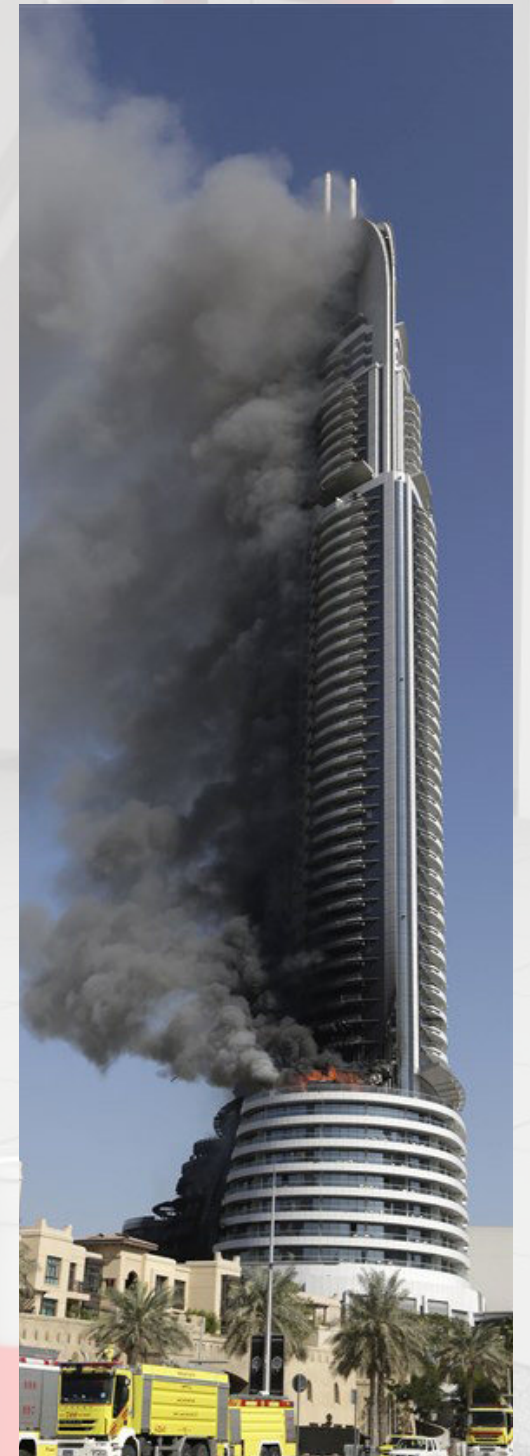


Steel girders



fischer 
innovative solutions

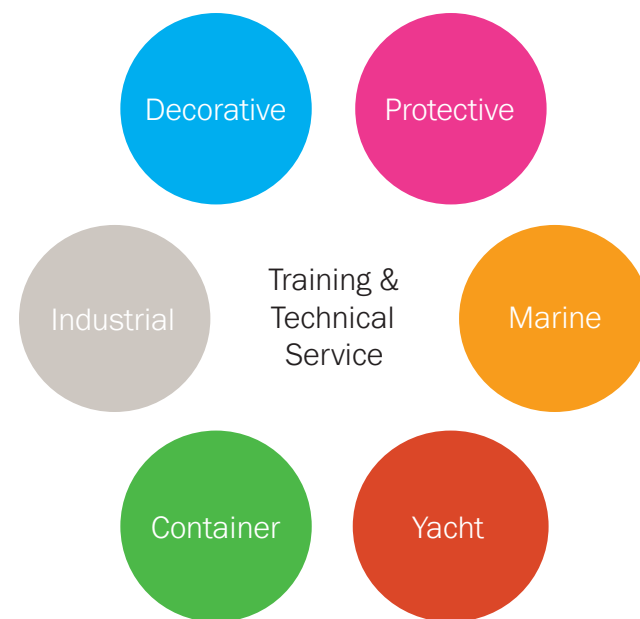
Firestop Solutions



Adding value to every business

At Hempel, we work across a wide range of industries. Our knowledge and expertise are broad, but our goals always remain the same: to provide our customers with proven products and solutions that add real value. We do this by continually investing in R&D, to ensure that we are developing technology that not only furthers our customers' businesses, but helps to reduce their environmental impact too.

Backed by a global team, Hempel has established itself in many countries around the world. This allows us to provide our customers with customised, locally-adapted services.



Our services:

- Pre-sales advice
- Onsite support
- Manufacturing optimisation
- Coating status and repair reports
- Customised maintenance support
- Inspections
- Training



Local market areas



Oil & gas

For 50 years, we have supplied corrosion-proof, high temperature-resistant, and special protective coatings for the oil & gas industry.



Chemical plants

Hempel has supplied chemical plants with anticorrosion, insulation-lining and chemical-resistant coatings for over 50 years.



Power generation

We have offered total protection suited to coal, gas, wind, hydroelectric and renewable energy plants for 40 years.



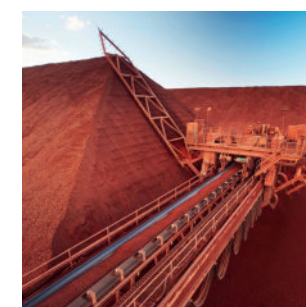
Port machinery

Hempel coatings are renowned worldwide for protecting cargo-handling equipment, maintaining port activities in active service for longer.



Infrastructure

Hempel's intumescent fire-retardant, protective and decorative coatings are used on skyscrapers, bridges and other buildings across the globe.



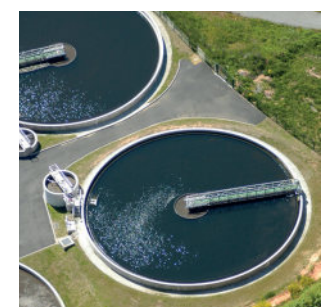
Mining

Our epoxy protective coatings lend good weathering, anticorrosion, impact- and abrasion-resistant properties to the global mining industry.



Railway wagons

We can supply cost-effective, wear-resistant and water-based coating systems to suit all railway needs, in compliance with environmental regulations.



Water & waste

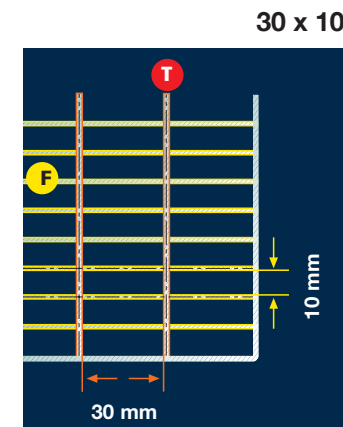
Hempel's high-performance corrosion- and chemical-resistant primers and topcoats guarantee better service life across the water treatment industry.

Grating is a structural element that has a high load-bearing capacity with a low dead weight and a high level of transparency. The positive-fitting connection of the bearing bars and cross bars with the surround make the grating not only a very stable, but also visually attractive product. The applications are very diverse, as grating is used everywhere in industry and architecture. As an extremely robust, safe yet light platform flooring, the grating is indispensable in all areas of heavy industry.

Grating is installed in refineries, power stations, steel mills, mines and on oil platforms. Every steelworker, metalworker and fitter needs grating in his trade. Grating is being used increasingly more in the logistics industry as platform flooring and shelves. Architects and building owners appreciate the grating as a product which is both aesthetically pleasing and functional – be this as decorative facade cladding, a suspended ceiling or sun shield.

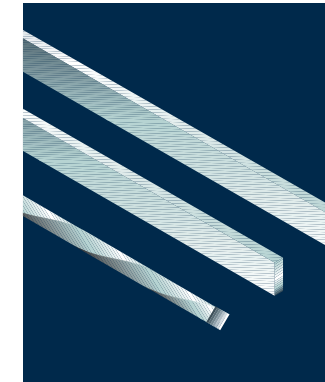
MEISER offers the largest range of grating worldwide. The diversity of possible applications also requires an unusually large variety of products. Together with our customers we select the right grating from our range. Grating is almost always relevant to safety, and we are well aware of this responsibility.

MEISER grating is 100 % made by MEISER. Our employees will be pleased to support and advise you with planning your projects. Static calculations and quantity surveys also form part of our scope of services. We set the highest standards for our products – from the planning stage to delivery.



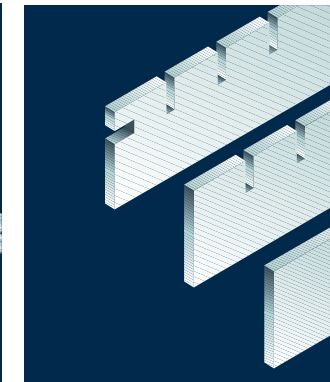
Mesh size

Mesh size is largely determined by the way the mesh is configured – i.e. depending on the different spaces which the bearing bar (T) and the cross bar (F) can take.



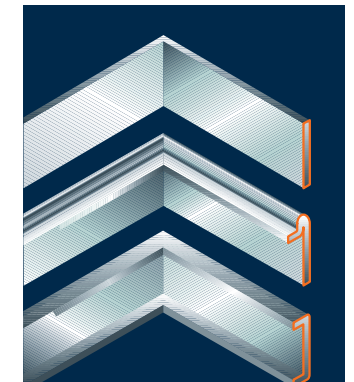
Cross bars

At right angles to the bearing bars, the cross bars connect the bearing bars with one another in that they are pressed and/or welded at the intersection points.



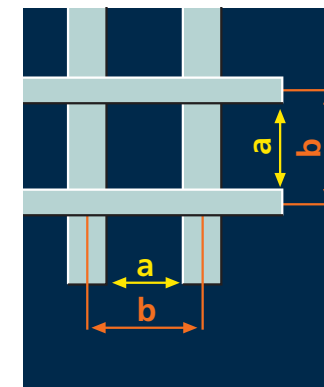
Bearing bars

In parallel with one another from one rest to the next, the bearing bars are the load carrying flat bars set out perpendicularly.



Banding bars

Gratings are usually banded allround by flat bar, T-shaped section or U-shaped section.



Mesh width =

clear distance (a) between the bearing bar and the cross bar

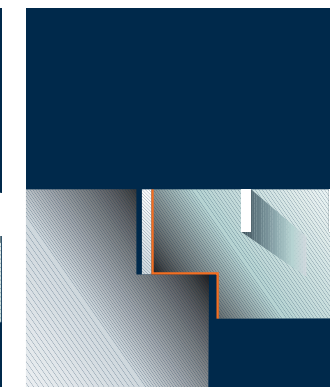
Mesh spacing =

measurement from axis to axis (b) for the bearing bars and cross bars



Angle collar

Is an angle welded on to the grating on one or more sides. The span of the angle should be at least bearing bar height.



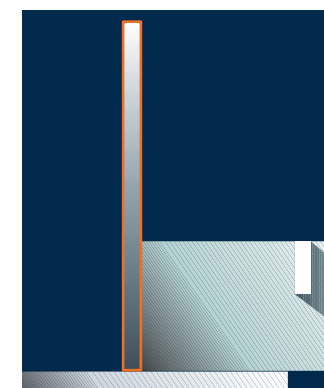
Notching

Special notching on the bearing bars and banding bars in the area of the rests



Cut-outs

These are entire sections or oblique sections removed from the grating. If the length of cut is smaller than 0.5 m, we refer to them as “small” cut-outs.



Bottom support

Banding strengthened and extended upwards



1- Installation Systems

Today's buildings are being constructed higher gradually, accordingly solving how to make the connections of mechanical installation to the structures creates serious problems for sanitary engineers. The thermal motion affects of pipes which move inside the structure or roof horizontally and perpendicularly only except their weights, contraction of the building during the time (elongation affects), stabilization solutions against earthquake loads are being made by LINK Project group. Today, LINK which has the product range to respond all requirements at the connection point of the mechanical installation to the structure are designing and producing solutions which are devoted to the requirements under project base. LINK produces user friendly, fast, economical solutions with its innovative point of view.

2- Ventilation Systems

LINK which has determined the missing and requirements of the sector correct and on time, has started to produce Air Passage Flange Profiles again for the first time in Turkey in 1987. Today, LINK, which is the biggest producer in Turkey, at the same time is the only company which produces Air Passage Flange Profile to produce 20,25,30,35and 40 mm dimensions. By making its production in latest technological machines, It achieves the production which addresses all pressure and force classes according to "SMACNA-HVAC Duct Construction Standard" and "DW144 Specification of Sheet Metal Ductwork" which are two standards that are valid world wide.



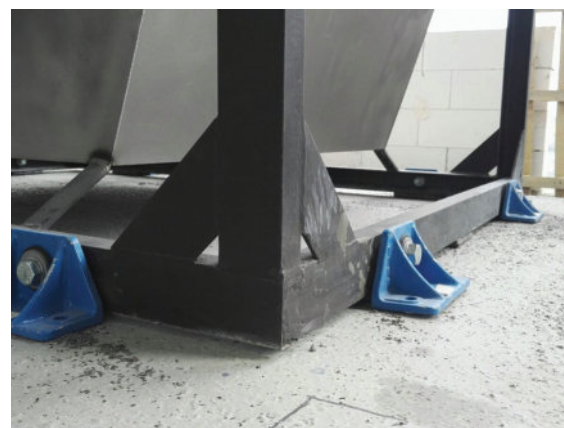
3- Sound and Vibration Isolation Systems

Vibration and noise complaints which are caused by vibration, increase day by day in modern buildings and appear suddenly in front of us as a problem which is not noticed often in daily life but which is a problem that may cause discomfort for. Material toils which are caused by furtive noise pollution together with uncontrolled vibration have become a problem to be destroyed. The solution is the static and dynamic load specifications of mechanical installation with the vibration insulators which are complicated within themselves and which are needed to be determined by considering many parameters. LINK gives its technical support service fort he selection and application of these products with the project group in its structure.



4- Seismic Restraint Systems

The damaging effects of earthquakes are of significant concern in many areas of the world. Earthquake's effect on the building's concrete structure could not be very serious, effects on mechanical pipes and equipments could be very serious. These effects result in loss of life and property will result in a serious loss of prestige. Especially after the earthquake a fire protection systems to maintain the status is of great importance. The impact of the fires after the earthquake because the consequence of the earthquake is more than two times increases. All the material and moral losses in the face of a possible earthquake, with the right material without the proper engineering calculations, and most reliable way to maintain the mechanical systems and equipment. Occurring serious loss of life and property as well as mechanical installation and equipment cost is very minor earthquake protection will be obvious to us all. LINK Yapı designs seismic restaint projects to limit movement of mechanical systems and equipments and save them. This seismic protection system is prepared for project-specific application details with calculations, the threat of life and minimizing the costs associated with long-term damage to equipment, installations, and reduces to zero.



5- Industrial Hanger and Support Systems

LINK uses its experience which it has gained for years in Energy production, to discover all necessary engineering solutions which are necessary for any pipe support at Petrochemical and Industrial Process plants and by associating that with its high quality product range, it shares its experiences with the implementing institutions. At the same time LINK designs and produces hanger and support solutions for each project according to its design parameters.

6- Anchor and Fixing Systems

LINK is the leader company in our country and area continue to locate itself as a product and system services for any special solution needs in global projects. We have strong and long life fixing solutions for all system that we supply especially Installation systems, seismic restraint systems and facade systems. Fixing systems is very critical at buildings especially in seismic zones so certificated products should be used in perfect engineering solutions..



7- Facade Systems

LINK, makes production of modern, sub construction connection elements for front coating pmducts (Natural Stone, Glass, Composite, GRC) with different, innovative point of view. It gives service in hanging technique with a few alternative solution focused systems. Especially in international construction market for the mounting of front systems which gain value and importance; it brings stmrcture profiles inside the concrete available for all kinds of armngement, prevents deformation during mounting as a result of wall plugging technique which is made at flooring and flat concrete later, which can be connected to the fittings as an innovative anchorage solution to the sector. At project stage. At project stage a very new line has been formed at the front with the stmrcture profile systems inside the concrete which will be applied with the accompaniment of the contractor and front mounting company. All technical service and pmduct selection which are necessary tor these analysis are made by the project group inside LINK'S body.



8- Modular Support Systems

LINK who produces innovations and solutions for hanger and support field in Turkey to this region, bring out new expansion to framing channels with PROLINK.

PROLINK will provide you faster, cost effective solutions which means revolution in support systems.

When technical help needed LINK engineers, with a Professional approach, will produce the economic and effective solutions for you.

LINK will continue to produce new solutions and ideas for you to work easier, faster and safer.





Our Products

Berdan Civata is a high-equipped and highly competent company for the manufacturing of special and standard industrial fasteners for an extensive range of sectors.



Bolt Production



Welded And Customized Products



BERDAN
CIVATA & SOMUN
TARSUS



Nut Production



Anchor Production



Quality Control Equipment

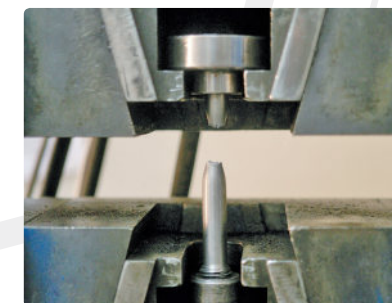
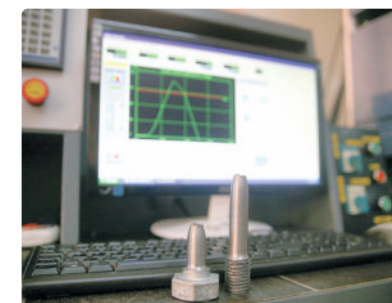


BERDAN
CIVATA & SOMUN
TARSUS



- Universal Tensile Equipment (600 kN & 5.000 kN)
- Hardness Test Equipment (Digital) (HRC-HRB)
- Hardness Test Equipment (Mechanical) (HRC-HRB)
- Electronic Portable Hardness Test Equipment (HRC)
- Micro Hardness Test Equipment (HV)

- Coating Thickness Measurement Devices
- Surface Roughness Test Equipment
- Magnetic Particle Testing Machine (Portable & Universal)
- Ultrasonic Crack Test Equipment



Manufacturer of Largest Size Bolts, Nuts & Studbolts with the First and Only Accredited Test Laboratory in Turkey



Roxtec sealing solutions for process industries

Explore the multitude of applications where you can benefit from our solutions.



Why use Roxtec?

- One opening for multiple cables and pipes
- Flexibility for cables and pipes of different sizes
- Built-in spare capacity for upgrades and retrofits
- Global certifications and standards
- Time-savings in design, installation and maintenance

One solution for multiple risks

- Ingress protection
- Rodent barrier
- Electrical safety
- Firestop
- Gas-tight, vapor-tight
- Blast protection

Cabinets & enclosures

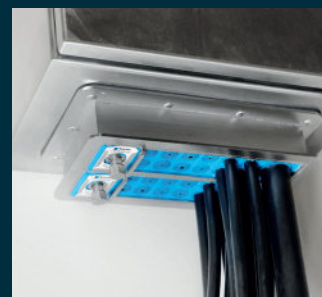
Roxtec cable entry solutions are ideal for field-based terminal boxes, electric heat trace cabinets, remote I/O cabinets, DCS/PLC cabinets and other high cable density applications in harsh environments. Use our seals to meet international safety requirements and to be prepared for changes in cable schedules or for additional cables of varying sizes.



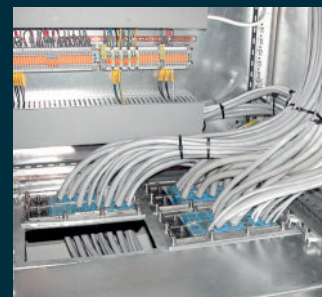
Field-based terminal boxes



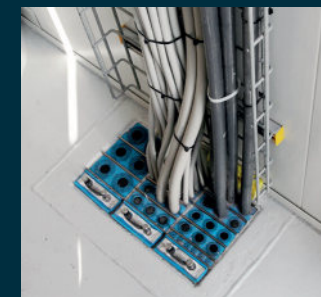
Electric heat trace cabinets



Remote I/O cabinets



DCS/PLC cabinets



Motor control centers



Substations



E-houses



Control rooms

Buildings – modular and built on site

Roxtec sealing solutions are ideal when multiple cables and pipes of different types and sizes enter walls, floors, roofs or underground in motor control centers, substations, E-houses, field auxiliary rooms, control rooms and other high cable density applications. The seals meet international safety ratings and are designed to withstand harsh environments. Use our solutions to ensure protection, save space, simplify design and speed up installation.

Fike is a globally recognised supplier of products and services that protect people, critical assets and facilities from hazards such as fire. With over 65 years experience in manufacturing safety solutions, Fike has grown into a global company with customers and offices on 6 continents.



Fire Protection

Detection & Control



A conventional 2-wire fire alarm system is often the natural choice for smaller applications or where budget constraints exist.

Fike's TWINFLEXpro² 2-wire fire alarm system has long been known for its adaptability and cost effectiveness within a variety of applications, big or small ... making it one of the most flexible products on the market.

Building on those strengths and designed for ease of use and state-of-the-art monitoring, the LPCB Approved TWINFLEXpro² is the next generation in 2-wire fire alarm reliability.

Fire Suppression



Fike's PROINERT² is the safest, most economical natural fire protection solution



FM-200 leaves no residue and doesn't require costly clean-up - reducing damage.



An ECARO-25® clean agent fire suppression system is the superior, cost-effective choice for protecting electronics and high-value assets

Explosion Protection & Venting Solutions

EXPLOSION VENTING



Fike explosion protection and venting systems help prevent the unthinkable from occurring, so your business and employees can remain safe from life-threatening accidents or disasters.

With more than 70 years invested in research, explosion hazards testing and product development, Fike has set a standard of quality and performance in explosion mitigation solutions.

EXPLOSION SUPPRESSION



Overpressure protection is essential to reliable process safety in counteracting extremes during heating of gases and liquids, or other incidents causing elevated pressures.

One volatile, unexpected incident – due to regulator failure, operator error or equipment malfunction – can result in catastrophic destruction of systems and equipment, or even lead to serious personal injury or loss of life.

Decades ago, Fike pioneered the development of pressure relief systems and has innovated continuous enhancements ever since. You can count on Fike to perform a comprehensive pressure relief analysis and specify the necessary overpressure protection





Sentinel™ Series Fire
Suppression Pumps



H₂O Works™
Municipal Pumps



EnviroFlo™ Hydronic
Pumping Solutions



AquaFloControl™
Plumbing Systems



- Mobile Reverse Osmosis Water Treatment System
- Make-Up Water Treatment System
- Hydroponic Greenhouse Water Treatment System
- Pharmaceutical Industry
- Ultrafiltration Water Treatment System
- River Water Treatment System
- Open Channel Ultraviolet Disinfection System
- Grey Water Treatment System
- Domestic Package Waste Water Treatment Plant
- Arsenic Removal System
- Filtration and Softening System
- Sea Water Desalination Plant



Water Ecosystem

Build Your A. O. Smith Whole Home System

Choose the components that fulfill
all your water treatment needs.



SEDIMENT PRE-FILTER

Reduce dirt, sediment
and chlorine taste and
odor from your water
prior to entering the
Central Water Filter.

CENTRAL WATER FILTER

Reduce 97% of
chlorine taste and
odor for great-
tasting, healthy water.

WATER SOFTENER

Softens your water to
reduce scale build-up
and eliminate hard
water spots and
stains.

POST-FILTER

Pick up any remaining
dirt or sediment down
to 5 microns.

UV FILTER

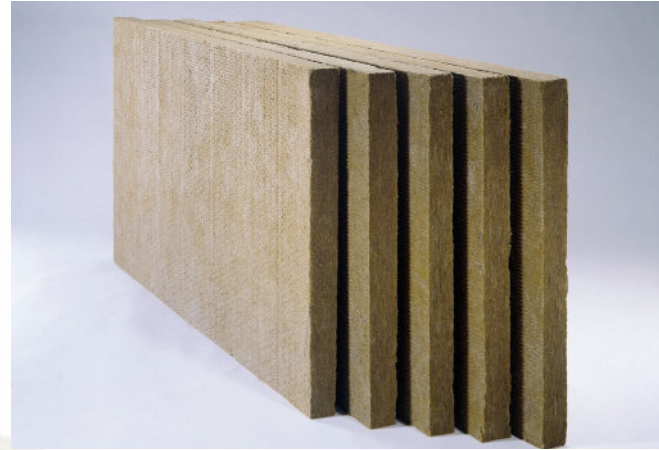
Reduce more than
99% of bacteria and
viruses from your
water.



5M Mühendislik
Müessillik Danışmanlık Ltd. Şti.



Industrial Blanket



Industrial Board



Industrial Duct Board



Industrial Loose Stone Wool



Industrial Stone Wool Prefabricated Pipe



Valve Jacket

Roll Filters



Panel Filters



Metal Filters



Bag Filters



Compact Filters



MDF Hepa Filters



Aluminium Hepa Filters



Metal Hepa Filters



Gel Gasket Hepa Filters



V-Modul Hepa Filters



Terminal Hood Hepa Filters



Aluminium Seperator Hepa Filters



Activated Carbon Compact Filters



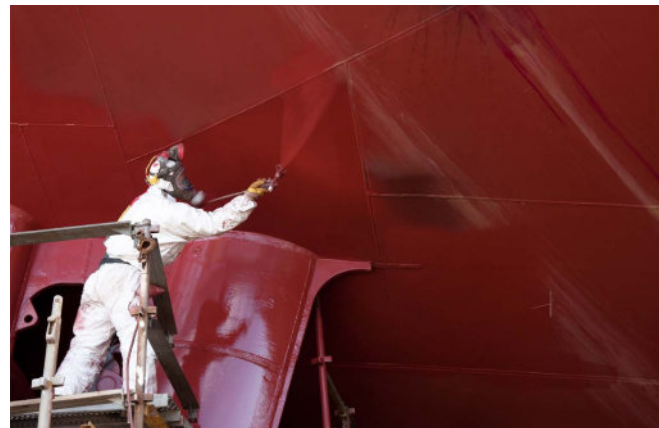
Activated Carbon Cartridges Filters



Installation Services



Surface Preparation



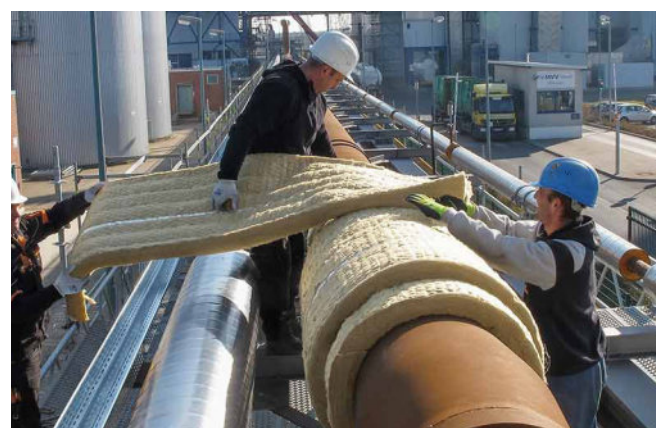
Protective Coating



PFP – Fireproof Cement Coating



Firestop Installation



Pipe Insulation

References

- HAOR Modernisation & Reconstruction Project – Aspen Seismic Raised Floor Systems
- HAOR Modernisation & Reconstruction Project – Meiser, Steel gratings and walkways
- HAOR Modernisation & Reconstruction Project – Fischer Chemical and Mechanical anchors
- HAOR Modernisation & Reconstruction Project – Roxtec Cable Transit Systems
- HAOR Modernisation & Reconstruction Project – Promat Fireproof Cement Coating
- HAOR Modernisation & Reconstruction Project – Firestop Materials for penetrations
- HAOR Modernisation & Reconstruction Project – Berdan Special Production Rods, base plates and bolts
- CWF (Caspian Water Front) Project- Fischer Chemical, Mechanical anchors, Fire Stops
- CWF (Caspian Water Front) Project- A.O Smith Water Treatment System
- CWF (Caspian Water Front) Project- Fike FM 200 Fire Suppression System
- Dinamo Hotel – Fike FM 200 Fire Suppression System
- Dinamo Hotel- A.O Smith Water Treatment System
- Dinamo Hotel- Fischer Chemical and Mechanical anchors



References

- MOT- Fischer Chemical and Mechanical anchors
- NGA Bravo Market- Firestop Materials
- Knight Bridges Project - Fischer Chemical and Mechanical anchors
- Knight Bridges Project – Fire Stop materials and installation for joints
- All Bravo Markets - A.O Smith Sand Filters, Istabul Kazan Boilers
- Crescent Development Project – Link Yapı Seismic hangers, support systems
- Crescent Development Project - Fischer Chemical, Mechanical anchors, Fire Stops materials and installation
- SOCAR Azerikimya Production Revamping Project- Berdan Special Production Rods, base plates and bolts
- SOCAR Azerikimya EP 300 - Meiser, Steel gratings and walkways
- SOCAR Azerikimya EP 300 – Steel Fireproof Protection installation
- SOCAR Azerikimya EP 300- İzocam, all pipe and equipment insulation materials
- SOCAR Polymer - Meiser, Steel gratings and walkways





ZETAŞ YAPI MALZ. SAN. VE TİC. LTD. ŞTİ.

Batı Bulvarı ATB İş Merkezi I Blok No:220 Yenimahalle / Ankara / Türkiye
Tel: +90 312 387 14 00 • E-mail: info@zetasyapi.com • Web: www.zetasyapi.com

ZETAŞ YAPI AZERBAIJAN OFFICE

Mikayıl Hüseynov Prospekti 35, Ofis 32, Sebail r., / Baku / Azərbaycan
Tel: +994 12 491 66 55 • E-mail: info@zetasyapi.az

ZETAŞ YAPI GEORGIA OFFICE

A. Tsereteli Avenue 72, Floor1, Building N2 / Tbilisi / Georgia
Tel: +995 322 35 97 59